

CORRIE MOREAU

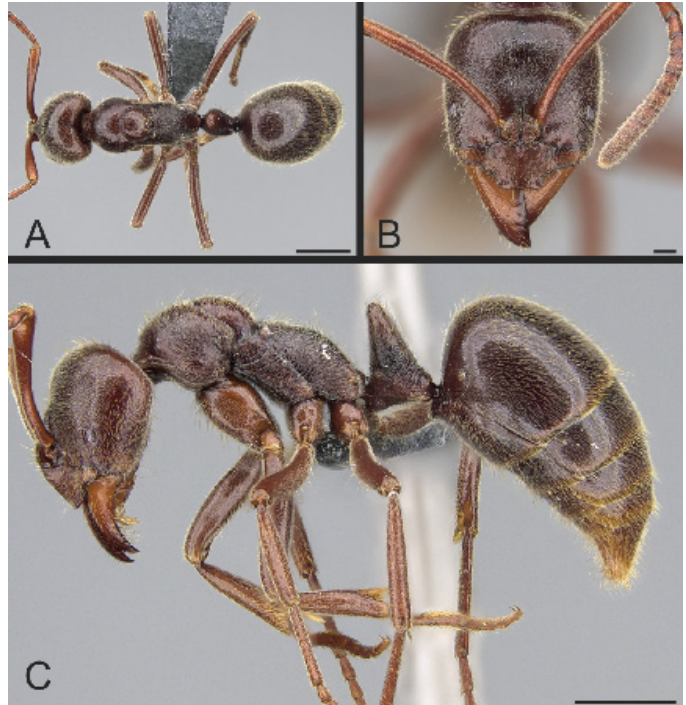
(1972 - Present)

Fields: Evolution/
ecology/systematics

Subject: Ants

Nationality: American

Entomologist
of the
Month



Corrie Saux Moreau is an evolutionary biologist, myrmecologist, and strong advocate for increasing opportunities for women and diversity in the sciences. She received her PhD in biology from Harvard University, mentored by Naomi Pierce and E. O. Wilson. Before opening her current lab at Cornell University as full professor, director, and curator of the Cornell University Insect Collection (2019-present), Corrie worked as curator at the Field Museum of Natural History (2008-2019), where she co-founded the Field Museum Women in Science Group. Moreau has made significant contributions to research regarding the evolution, ecology, biogeography, systematics, and diversification of insects and their microbial gut-symbionts using molecular and genomic tools. She and colleagues established the evolutionary origin of ants, and her work has opened new areas of research into gut-associated bacteria and ant developmental biology, particularly regarding cuticle development in turtle ants (*Cephalotes*). Corrie has been elected as a Fellow of several prominent scientific societies for her monumental achievements as both a scientist and mentor; and a new ant genus (*Corrieopone nouragues*, above) and species (*Strumigenys moreauviae*) has been named after her.

References:

- Moreau, C. S. et al. (2006). Phylogeny of the ants: diversification in the age of angiosperms. *Science* 312, 5770.
- Esteves, F. A. & Fisher, B. L. (2021). *Corrieopone nouragues* gen. nov., sp. nov., a new Ponerinae from French Guiana (Hymenoptera, Formicidae). *ZooKeys* 1074. (above).
- This factsheet was produced by Sean Bresnahan, a Penn State Integrative Pollinator Ecology graduate student

April 2022